



# COTTAGE

CEDAR CREEK

2026 **FIFTH WHEEL** FLOORPLANS



**FOREST RIVER**

FORESTRIVERINC.COM



# OUR STORY

For over 27 years, Cedar Creek has been dedicated to helping people experience the joy of the outdoors by building high-quality recreation vehicles.

**The Cedar Creek Advantage** - Cedar Creek fifth wheels and wide-body destination TT & FW's by Forest River deliver one of the best-built products designed specifically for RV living. Our unique, All-Aluminum super-structure, on 16" centers or less, and "True" Gelcoat Exteriors reflect a residential-style construction without the use of purchased, laminated sidewalls. Cedar Creek is our customers' first choice in RV'ing and long-lasting durability.

Cedar Creek, **the Smart Choice for the Experienced RVer'**

## 41FWC

Hitch Weight: 2,820 lbs.

GVWR: 16,564 lbs.

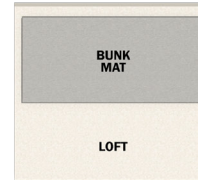
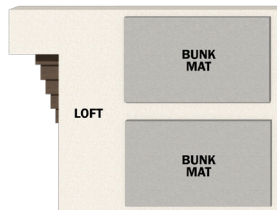
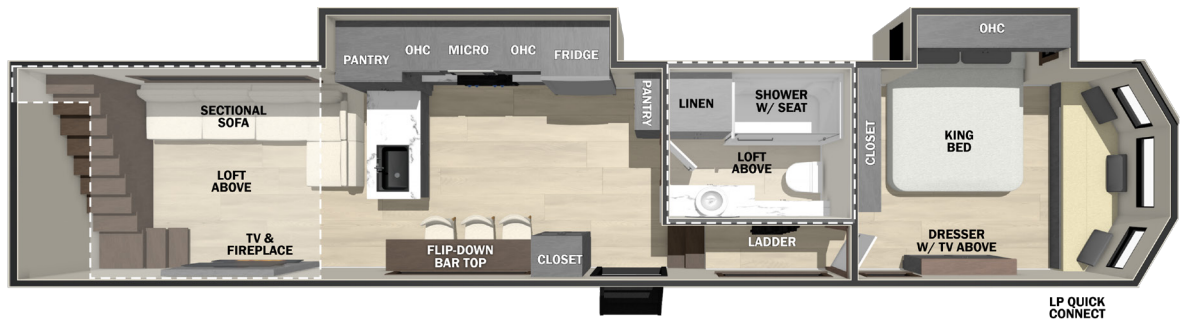
UVW: 14,314 lbs.

CCC: 2,250 lbs.

Length: 42' 4"

Height: 13' 5"

Width: 101"



# 412FWC

Hitch Weight: 2,355 lbs.

GVWR: 18,489 lbs.

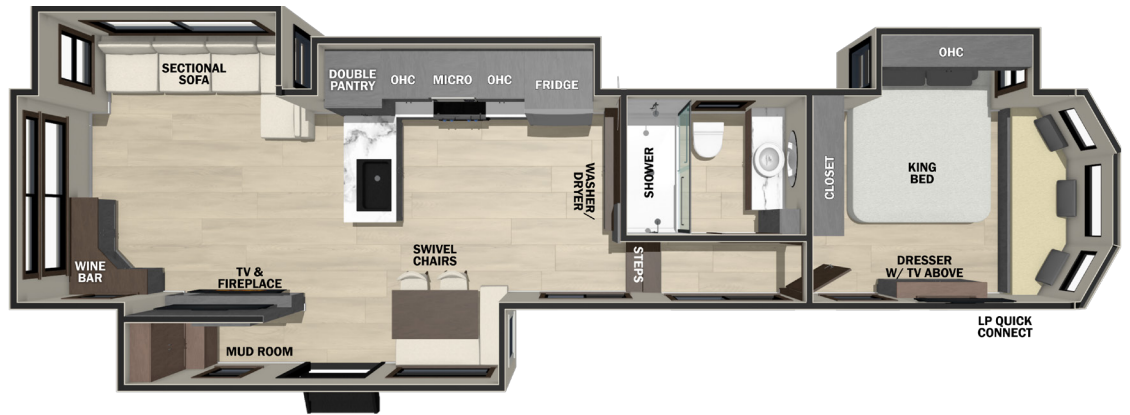
UVW: 15,489 lbs.

CCC: 3,000 lbs.

Length: 42' 4"

Height: 13' 5"

Width: 101"



# 413FWC

Hitch Weight: 2,480 lbs.

GVWR: 18,500 lbs.

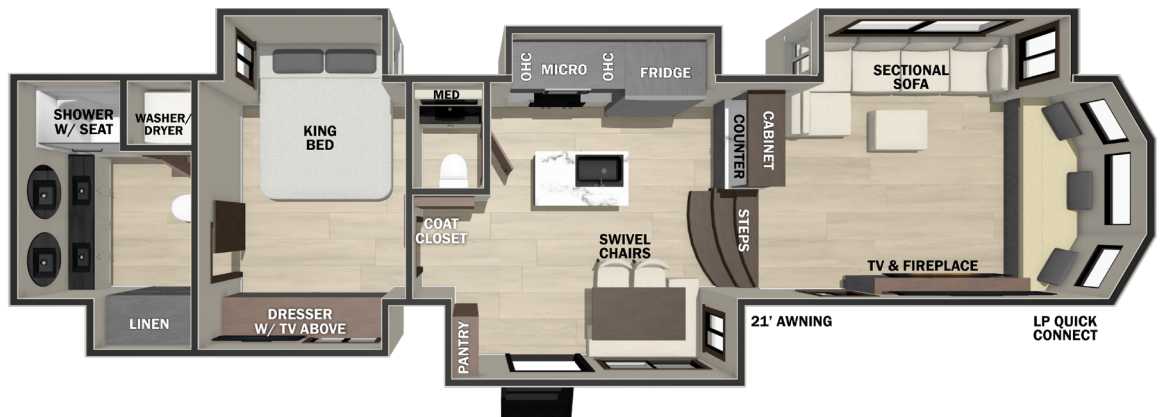
UVW: 15,609 lbs.

CCC: 2,891 lbs.

Length: 42' 5"

Height: 13' 5"

Width: 101"



## Exterior

- 101" Wide Body Frame
- Hi-Gloss, "True" Gelcoat Exterior - truly one of the best fiberglass exteriors on the market.
- Cedar Creek's Famous All Aluminum Superstructure on 16" Centers or less
- 3M® Bonded Sidewalls—Resilient, they grow stronger with age. They also have outstanding resistance to UV, heat, cold, moisture, oils, gasoline, and highway chemicals.
- Hydraulic Front Jacks Only
- 21,000 LB. Rhino Box Hitch
- 4' x 6' ABS, Ribbed, Removable Underbelly Panels
- AlphaPly TPO Roof Membrane featuring a Limited Lifetime Warranty
- 12-Volt Heating Pads on All Black, Grey, & Fresh Water Tanks
- 38" x 80" Friction Hinge, Black Glass Entry Door with New Entry Door Latch Extension
- Individual Shut Off Valves - Kitchen and Bathroom
- Nautilus P4 Multi-function Panel with Outside Shower, Black Tank Flush, 12 volt. Battery Disconnect
- Water and bug resistant Vixenite Slide Room floor panels
- New Suburban ST-60 60,000 BTU Tankless Water Heater
- One Year of™ RV Roadside Assistance
- Free Membership to Forest River Owners Group F.R.O.G.

## Electronics

- 65" Smart TV with Backlighting in LR
- 32" Smart Television in the BR
- 12v Bluetooth Stereo Speaker in ceiling
- New TravelFi™ Pay as you go internet
- 200-watt Solar Panel

## Kitchen

- Refrigerator with Icemaker
- 3 Burner Gas Oven with Pull-Out Pan Drawer
- Vixenite™ Flush Floor Slides in Kitchen and Living Area
- Flush Floor Slides in Kitchen and Living Area
- Residential-Style Kitchen Island with Solid Surface Counter with Flush Mount, Stainless Steel, Work Station Sink
- Double Pull-out Pantry
- Pull out Double Trash Bins
- Pull Out Flatware Cylinders
- Residential-Style Dovetail, Self-Closing Drawers, and Hidden Hinge Cabinet Doors
- Stainless Steel, 30" Over the Range Microwave
- Power Fan with Rain Sensor Override in Kitchen
- Vinyl Floor Covering
- Flip Down Breakfast Counter with 3 chairs (41FWC Only)
- Matte Luxe Cabinets and Fascia

## Living Room

- New 52" Ceiling Fan in the Living room
- "L" Shaped Sofa (where applicable)
- J-Lounge Sofa with Pull Out Trundle creating a Full Size Sleeping area (41FWC Only)

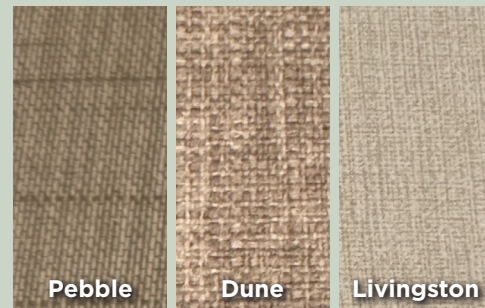
## Bathroom / Bedroom

- One Piece, Fiberglass Shower with glass doors, and Upgraded Shower Head
- Large Vessel Sink, Bath Vanity with Backlit Mirror (Where Applicable)
- 18" High Porcelain Toilet with Top Circular Flush System
- Extra Storage for Linens
- LED Night Lighting under the Vanity
- Residential-Style Headboard with Luxurious Bedding Décor
- Individual Reading Lighting above the Bed
- USB Ports
- Standard 72 x 80 King Bed
- Flip-Up Dresser Top with Hidden Storage
- Splendide Washer / Dryer Installed
- 12V Motion lighting in the Closet

## Options

- Slide Room Awning Toppers (All Available Slides)
- 18' Exterior Power Awning
- 2ND Power Awning (N/A on 413FWC)
- 3RD A/C Unit
- Heat Pump Air Conditioner in the Bedroom
- 3 Sets of Stabilizer Jacks (Total of 6)
- New Printed AION Gelcoated Exterior - Carbon, Coastal

## Fabrics



## Aion Exterior Options - Coastal and Carbon

### What Is Aion UV?

Aion UV (pronounced "eye-on"), inspired by the Greek god symbolizing eternity, utilizes a patented process and ultraviolet light to cure digital paint on RV exteriors. Our innovative, eco-friendly approach provides unmatched flexibility. It enables the creation of beautiful and durable designs that seamlessly adapt to any style or requirement. These designs remain strong and visually appealing over time. Each surface is protected with two coats of a top-tier automotive-grade clear coat, providing exceptional protection and a brilliant finish.



Carbon



Coastal

**CEDAR CREEK**

**CONNECT WITH US**  
open your camera app



**SCAN ME**  
FOR RESOURCES



[ForestRiverInc.com/CedarCreek](http://ForestRiverInc.com/CedarCreek)



Specifications			
Model	412FWC	41FWC	413FWC
Exterior Length	42'4"	42'4"	42'5"
Exterior Height with Air Conditioner	13'5"	13'5"	13'5"
Exterior Width	101"	101"	101"
Hitch Weight	2,355	2,820	2,480
Unloaded Vehicle Weight	15,489	14,314	15,609
GVWR	18,489	16,564	18,500
Gross Cargo Capacity	3,000	2,250	2,891
Awning Size	Option	Option	Option

## EACH NEW FOREST RIVER PURCHASE PROVIDES:

- ✓ Pre-delivery Inspection. ✓ Digital Owner's Manual.
- ✓ Free Membership to Forest River Owners Group (FROG).  
Learn more at [www.forestriverfrog.com](http://www.forestriverfrog.com).
- ✓ A Contribution to Care Camps Foundation [www.carecamps.org](http://www.carecamps.org).
- ✓ 1 Year Free Roadside Assistance from Date of Purchase.



### LEARN MORE:

Scan this QR code with your mobile device to learn more about Forest River.



## FOREST RIVER INC. CEDAR CREEK DIVISION

501 Hawpatch Drive, Topeka, IN 46571  
(260) 593-4000



YOUR **CEDAR CREEK** DEALER