

CEDAR CREEK

2026 **FIFTH WHEEL** FLOORPLANS



FOREST RIVER

FORESTRIVERINC.COM



OUR STORY

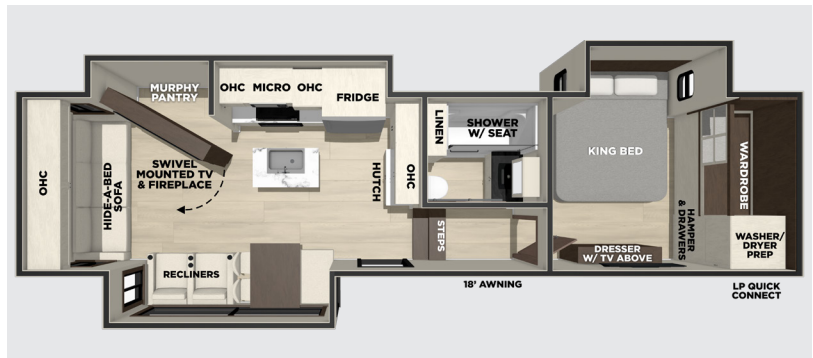
For over 27 years, Cedar Creek has been dedicated to helping people experience the joy of the outdoors by building high-quality recreation vehicles.

The Cedar Creek Advantage – Cedar Creek fifth wheels and wide-body destination TT & FW's by Forest River deliver one of the best-built products designed specifically for RV living. Our unique, All-Aluminum super-structure, on 16" centers or less, and "True" Gelcoat Exteriors reflect a residential-style construction without the use of purchased, laminated sidewalls. Cedar Creek is our customers' first choice in RV'ing and long-lasting durability.

Cedar Creek, **the Smart Choice for the Experienced RVer'**

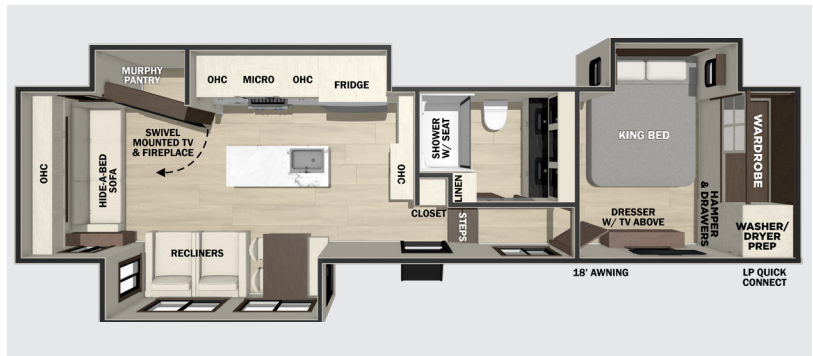
29RL

Hitch Weight: 2,375 lbs.
 GVWR: 16,375 lbs.
 UVW: 11,810 lbs.
 CCC: 4,506 lbs.
 Length: 33' 3"
 Height: 13' 5"
 Width: 101"



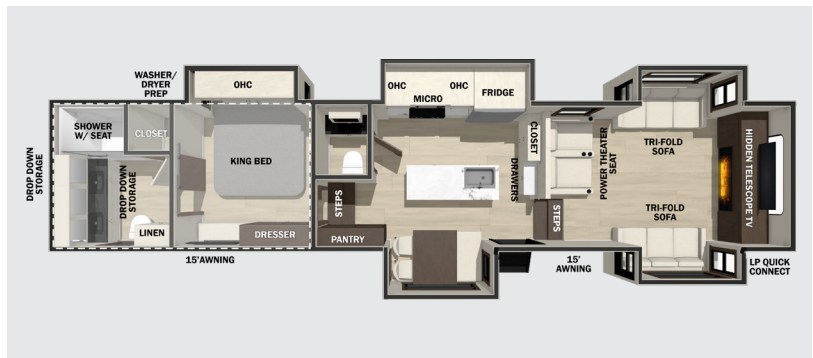
361RL

Hitch Weight: 2,505 lbs.
 GVWR: 16,505 lbs.
 UVW: 14,109 lbs.
 CCC: 2,396 lbs.
 Length: 40' 9"
 Height: 13' 5"
 Width: 101"



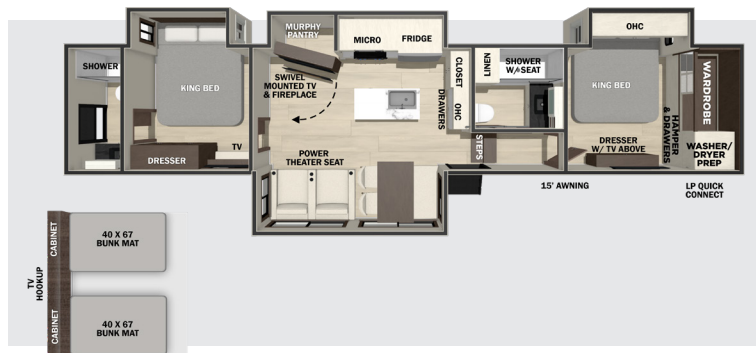
370FL

Hitch Weight: 2,685 lbs.
 GVWR: 16,685 lbs.
 UVW: 14,694 lbs.
 CCC: 1,991 lbs.
 Length: 41' 5"
 Height: 13' 5"
 Width: 101"



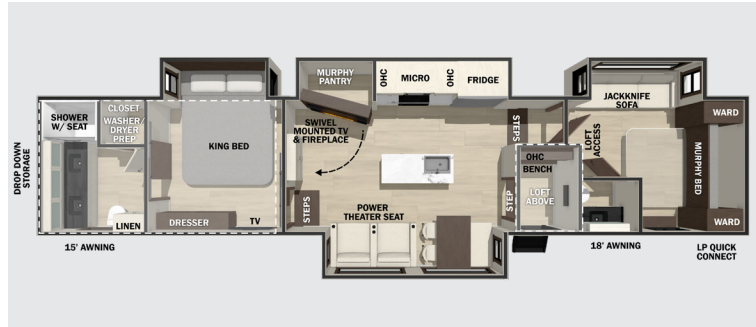
380B

Hitch Weight: 2,151 lbs.
 GVWR: 16,855 lbs.
 UVW: 14,704 lbs.
 CCC: 2,151 lbs.
 Length: 43' 5"
 Height: 13' 5"
 Width: 101"



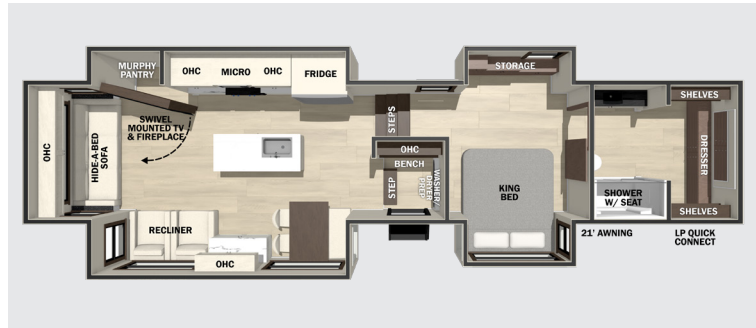
381MUD

Hitch Weight: 2,571 lbs.
 GVWR: 18,000 lbs.
 UVW: 15,429 lbs.
 CCC: 2,571 lbs.
 Length: 43' 5"
 Height: 13' 5"
 Width: 101"



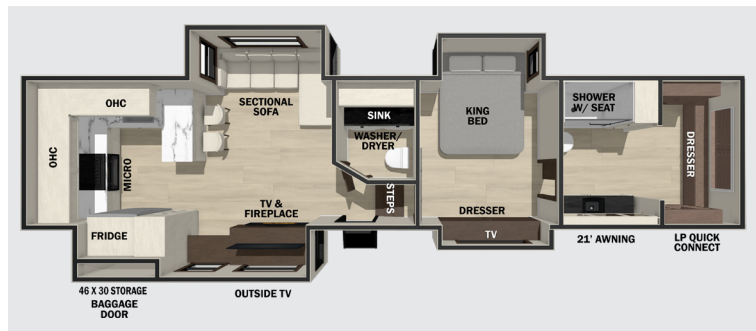
383FB

Hitch Weight: 3,015 lbs.
 GVWR: 18,000 lbs.
 UVW: 15,139 lbs.
 CCC: 2,861 lbs.
 Length: 42' 1"
 Height: 13' 5"
 Width: 101"



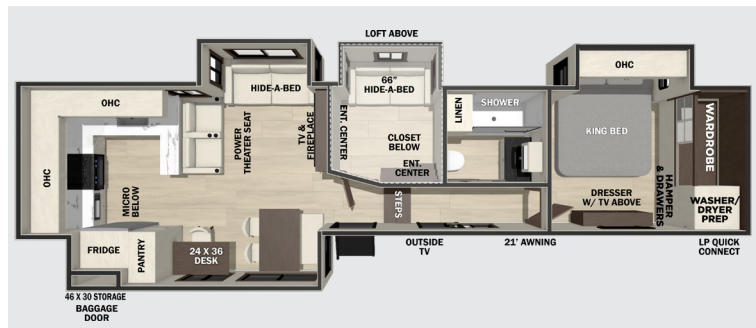
385RK

Hitch Weight: 3,221 lbs.
 GVWR: 18,000 lbs.
 UVW: 14,779 lbs.
 CCC: 3,221 lbs.
 Length: 41' 9"
 Height: 13' 5"
 Width: 101"



39RKB

Hitch Weight: 2,376 lbs.
 GVWR: 16,860 lbs.
 UVW: 14,484 lbs.
 CCC: 2,376 lbs.
 Length: 43' 3"
 Height: 13' 5"
 Width: 101"



Full Body Paint Options



Sapphire



Opal



Onyx

Exterior

- 101" Wide Body Frame
- Hi-Gloss, "True" Gelcoat Exterior - truly one of the best fiberglass exteriors on the market.
- True Gelcoat, Painted, Front Cap
- Cedar Creek's Famous All Aluminum Superstructure on 16" Centers or less
- 3M® Bonded Sidewalls—Resilient, grow stronger with age. They also exhibit outstanding resistance to UV, heat, cold, moisture, oils, gasoline, and highway chemicals.
- 6-Point Hydraulic - GEN 3 Leveling System
- 21,000 LB. Rhino Box Hitch (N/A on Champagne Package)
- 50" Outside TV - 39RKB, 385RK Only
- Square Windows with Integrated Reflective Shade (N/A on Champagne Package)
- Z-frame with Black Textured Metal Wrapped Skirting to the Frame
- RoadTech™ Tire Pressure Monitoring System (TPMS)
- ABS Brakes
- Lionshead Special Trailer (ST) Tires "No Excuses" One-Year Guarantee!
- 4' x 6' ABS, Ribbed, Removable Underbelly Panels
- Animal Leash Latch
- AlphaPly™ TPO membrane with Limited Lifetime Warranty
- Motion Lights in Outside Storage Areas and Front Storage Area
- Road Warrior™ Suspension with Wet Bolts and Bronze Bushings
- 2 Coleman MACH 8, Energy Saver, Soft Start, 15,000 BTU Air Conditioners
- 12-Volt Heating Pads on All Black, Grey, & Fresh Water Tanks
- Heated Front Storage Compartment with Motion Lighting
- Main awning with LED Night Lighting
- Extra Wide, Friction Hinge, Black Glass Entry Door with New Entry Door Latch Extension

- Docking Station with Nautilus P4 Multi-function Panel with Outside Shower, Black Tank Flush, 12 volt. Battery Disconnect
- Water and bug resistant Vixenite Composite Slide Room floor panels
- Suburban ST-60 60,000 BTU Tankless Water Heater
- 4 Pin Connector Plug
- Deep Cell Battery
- "Rich Solar" 200-Watt Solar Panel
- Bike Rack Receiver (N/A 370FL, 381MUD)
- One Year of RV Roadside Assistance
- Wired for Furrion® Rear Observation Camera (N/A on Champagne Package)
- Free Membership to Forest River Owners Group F.R.O.G.

Electronics

- 50" Smart Television w/Swing Arm (370FL, 385RK on TV Lift)
- 32" Smart Television in the BR
- 12v Bluetooth Stereo Speaker
- New Travelfi™ Pay-as-you go internet

Kitchen / Living Room

- Entire Coach Water Filtration System
- Murphy Pantry (N/A 370FL, 39RKB, 385RK,)
- New VIEGA MANABLOC 1/2 14 PORT Water Manifold System
- Stainless Steel, 110v Refrigerator with inverter
- 3 Burner Gas Oven with Pull-Out Pan Drawer
- Dovetail Drawers with Self Closing Drawer Glides
- Walnut / Two Tone Cabinetry with Hidden Hinges
- Residential Kitchen Island with Solid Surface Countertop with Flush mounted workstation sink
- Stainless Steel, Workstation Sink
- Stainless Steel, 30" Over the Range Microwave with updated Backsplash
- Dishwasher Prep
- 52" Ceiling fan
- Cutting Board Drawer with Cut-out Trash Funnel
- Power Fan with Rain Sensor Override in Kitchen
- Vinyl Floor Covering, including Slides
- Wall Mounted Walnut table with (2) Chairs, Storage Ottoman, Table Extension, and Hidden Silverware Drawer. (N/A 39RKB, 385RK)
- Power Theater Seating with USB charging ports W/A
- Luxury 86" Hide-a-Bed Sofa W/A or "L" Sofa with recliner W/A

Bathroom / Bedroom

- Redesigned 48" x 30" Rectangular shower with seat, sliding glass doors, and an Upgraded Shower Head
- Large Single or Double Sink Bath Vanity with Solid Surface Counter
- 18" High Porcelain Toilet with Top Circular Flush System
- Create-A-Breeze Circulation Fan
- Extra Storage for Linens
- LED Night Motion Lighting under the Vanity
- Residential Style Headboard with Bedding Décor
- Upgraded Bedding Décor
- Dresser with Solid Wood Top
- Standard 72 x 80 King Bed
- Prepped for an Optional Washer and Dryer
- 12V Motion lighting in the Closet

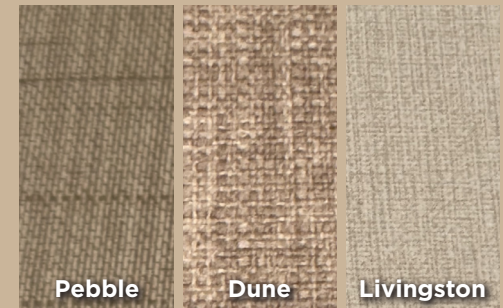
Options

- 3rd Coleman MACH 8, Energy Saver, 15,000 BTU Air Conditioners
- Cummins OG 5.5K Onan LP Generator w/LP Prep
- 2nd Power, Dining Slide Awning (N/A on 370FL)
- Curt™ Touring Package with TCS Coil Suspension & Helux™ Curt Hitch with Lighting Package
- Full Body Paint Package (Onyx, Sapphire, Opal)
- Square Dual Pane Frameless Windows
- Heat Pump in Bedroom only
- Awning Slide Toppers

Optional Cedar Creek Champagne FW Package Includes

- 3 Camera Security System
- Electric Dump Valves
- Power Cord Reel
- Square, Dual Pane Windows
- 2nd Electric Slide Awning
- Generator Prep in Front Storage
- 3 Soft Start Air Conditioners
- Awning Slide Toppers
- Splendide Washer / Dryer
- Swivel, Dining Chairs
- Champagne Logo
- Upgraded Mattress
- Gooseneck Rail Lighting

Fabrics



CEDAR CREEK

CONNECT WITH US
open your camera app



SCAN ME
FOR RESOURCES



ForestRiverInc.com/CedarCreek

EACH NEW FOREST RIVER PURCHASE PROVIDES:

- ✓ Pre-delivery Inspection. ✓ Digital Owner's Manual.
- ✓ Free Membership to Forest River Owners Group (FROG).
Learn more at www.forestriverfrog.com.
- ✓ A Contribution to Care Camps Foundation www.carecamps.org.
- ✓ 1 Year Free Roadside Assistance from Date of Purchase.



LEARN MORE:

Scan this QR code with your mobile device to learn more about Forest River.



A Berkshire Hathaway Company

FOREST RIVER INC. CEDAR CREEK DIVISION

501 Hawpatch Drive, Topeka, IN 46571
(260) 593-4000



YOUR **CEDAR CREEK** DEALER

