

# CEDAR CREEK

2027 CONSTRUCTION GUIDE

## ANYTHING BUT BASIC



FOREST RIVER

FORESTRIVERINC.COM

# HOW IT'S MADE CEDAR CREEK STRONG



200Watt Solar Panel



(2) 15,000 BTU, Soft Start  
air conditioners

**EXTENDED ENTRY DOOR HANDLE**  
on 32" Entry door



## TESTING AND INSPECTIONS

Weekly, Cedar Creek units are put through Forest River's pre-delivery inspection facility. This 20,000 square foot facility gives our customers the ultimate assurance of quality. Our state-of-the-art facility gives immediate, daily feedback to production for optimum quality assurance in every unit we build.

**7000# AND 8000# AXLES**  
with ABS brakes



Tire Pressure Monitor  
System (TPMS)

## TRUSSES

Our 5" all-aluminum roof rafters allow us to install two 15,000 standard air conditioners and ensure universal cooling with a dual zone control system.

*\*Three air conditioners are standard on Cottage Travel Trailers only*

## HEATED TANKS

Black, grey, and fresh water tanks are installed with individual 12-volt, large surface heating pads on ALL tanks. These tank heaters allow for extended season camping.

## Z-FRAME

Cedar Creek's "Z" Frame design is the industry standard. This unique frame was created to give our customers over 100 cu. ft. of extra front storage space. This flat floor design assists in easy removal of your heavy camping equipment.

## SEE HOW THE SMARTEST CHOICE STACKS UP TO THE COMPETITION

Cedar Creek is dedicated to enhancing the joy of the outdoors and your peace-of-mind by building better quality recreational vehicles designed to withstand rugged road conditions and extreme temperatures. Experience Cedar Creek and see where the road leads and enjoy what life has to offer!



**“TRUE” GELCOAT EXTERIOR**  
with painted front fiberglass cap

**METAL WRAPPED**  
to the frame

**101” WIDE BODY**  
rugged “Z” frame

**GEN 3, 6-POINT HYDRAULIC LEVELING SYSTEM**  
with auto return

**SCAN THE QR CODE WITH YOUR DEVICE**  
FOR MORE CEDAR CREEK INFORMATION AND VIDEO TOURS



### ROOFING

AlphaPly Roofing Membrane with Limited Lifetime Warranty.  
*\*Limited Lifetime Warranty on materials only. Does not include labor or the roof itself.*

### INSULATION

We glue residential style, glass wool insulation in-between the frame, expanding the sidewall’s insulation to full capacity.

### SUPER STRUCTURE

Cedar Creek’s famous, handmade, ALL aluminum super structures are built on 16” centers (or less.)

### UNDERBELLY

Each steel frame underbelly is covered with a 4’x6’ ABS, removable, impact-resistant, waterproof underbelly panel(s).

# LIPPERT'S ANTI-LOCKING BRAKING SYSTEM

**HAUL SAFER  
AND SMARTER  
THAN EVER!**



## **INDUSTRY-FIRST STANDARD ABS FOR TOWABLE TRAILERS**

The Lippert trailer anti-lock braking system is innovative towing technology designed to let you haul safer and smarter than ever. It combines the best of ABS and connected RV technology to deliver a comprehensive safety platform for all trailer types, particularly travel trailers, 5th wheels, cargo and equestrian trailers.

Our ABS system works with the trailer brakes, fully integrating with the existing platform to deliver exceptional towing safety.

## **ADDITIONAL FEATURES:**

- Promotes exceptional towing safety and driver confidence.
- Improves control on slippery roads and in emergency braking situations.
- Integrates with trailer brakes to prevent trailer wheel lock-up.
- Applicable across virtually all trailer types (2-6 wheels / 1-3 axles).
- Works with electromagnetic drum brakes (7-way wiring connector required).
- Fully compatible with or without OEM or aftermarket brake controllers.
- Non-intrusive system will not interfere with trailer gain settings.
- Encompassing kit includes everything needed for complete installation.

# UNIQUE, HIGH-END UNDERBELLY DESIGN



## EXTENDED-STAY APPROVED!

### ALL

TANKS HEATED FOR  
EXTENDED SEASON CAMPING

### ABS

IMPACT RESISTANT  
UNDERBELLY



#### • ABS UNDERBELLY PANELS

Each steel frame is covered with a unique ABS, removable, impact-resistant, waterproof underbelly panel(s). Each 4' x 6' panel is inserted front to back, inside each frame crossmember. They're anchored into a braced wood backer within the frame for optimum security.



#### • ADVANTAGES TO PANEL DESIGN

Our sectional design allows for easy access into the underbelly without destroying the integrity of the frame or creating areas for rust to start.

#### • INSULATED

Competitors install a one piece underbelly design which is screwed into the frame. Cedar Creek's installation of the underbelly includes a Radiant Shield, Thermo-foil layer, and is installed into the underbelly



#### • LARGE SURFACE, 12V. TANK HEATERS

Black, grey, and fresh water tanks are installed with individual 12-volt, large surface heating pads on ALL tanks.

# ALL ABOUT THE RUGGED FLOOR

## HEAVY-DUTY CONSTRUCTION FEATURES

Cedar Creek's famous aluminum superstructure starts with 2"x 3" aluminum floor joists on 16" centers. Glass wool insulation is then installed. The heat duct and water lines are protected within the frame away from exterior walls.

Our joists are then enclosed with 5/8", tongue and groove, plywood panels. (Weyerhaeuser fiberboard is commonly used by our competitors). Each floor is bonded to the aluminum substrate with 3M™ Polyurethane adhesive. This adhesive is applied along every stud within the floor. The plywood is then installed and screwed down every six inches into the aluminum stud.



# FIT AND FINISHED Z-FRAME DESIGN

## 100%

ALL ENTRY AND BAGGAGE DOORS  
ARE ALUMINUM FRAMED

## 100<sup>CU.</sup> FT.

OF FRONT STORAGE  
WHERE APPLICABLE

## Heated Front Storage



**BUILT SOLID SO YOU  
CAN ENJOY YOUR Zzz'S**

Rest assured, Cedar Creek's "Z" Frame design is the industry standard. This unique frame was created to give our customers over 100 cu. ft. of extra front storage space where available. This flat floor design assists in easy removal of your heavy camping equipment.



# HANDCRAFTED CABINETS



## CRAFTED BY THE BEST IN THE BUSINESS

Kitchen cabinets can be one of the most striking features in a new fifth wheel. All of our cabinets are built from quality materials and are hand assembled by in-house skilled craftsmen and women. All lumber core stiles are predrilled and countersunk. This creates long lasting quality cabinetry that will stand the test of time.



# MORE CEDAR CREEK ADVANTAGES

## STRUCTURAL QUALITY AND INTEGRITY

Cedar Creek's famous, handmade, ALL aluminum super structures are built on 16" centers or less. Individually fastened, custom "L" brackets are combined with Silaprene adhesives that are designed to bend, flex and absorb road stress. Silaprene adhesives have a 475 PSI (pounds per square inch) and get stronger as it ages. It is resilient and has outstanding resistance to moisture, road chemicals, heat, and cold.

Cedar Creek's walls sit on top of the floor and are bolted to the outrigger. This allows for full aluminum framing around all windows and doors.

Laminated sidewalls are the most commonly produced sidewall in the industry. These walls start with a welded frame that generally runs every 24"- 48" on center. Welded frames are not designed for strength, but for parameter structure. Polystyrene foam is placed inside the framework. The interior wall board and exterior materials are either pinch-rolled with an adhesive, or vacuum bonded into a one piece wall. The trailer's strength does not come from



the frame, but from the fact that the wall is one piece. Other manufacturers do not build their walls, they just assemble them.

Question: How do you repair a one piece wall if it has been damaged?

Answer: The Cedar Creek advantage is serviceability!

High gloss, "True" Gelcoat exteriors are truly one of the best fiberglass exteriors on the market. So don't be fooled by the newer, "Gelcoated" exteriors. True gelcoat is a thicker, durable finish designed to help maintain its color over time. This gelcoat exterior remains our customers' first choice for lasting beauty. Silaprene is placed on every stud. The gelcoat is brought up to the frame and screwed around the parameter. Six foot clamps are then applied to the sidewall,

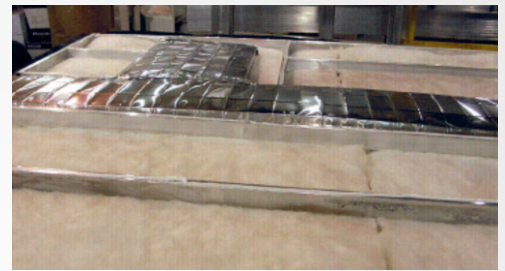
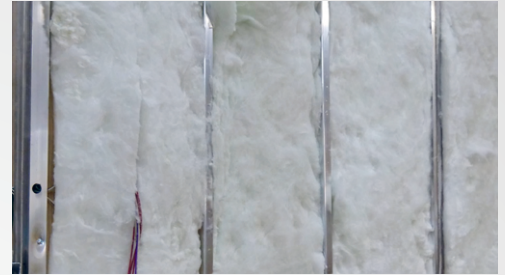
compressing the exterior fiberglass into the adhesive while it cures.

A Cedar Creek unit gets its strength from the frame, not from lamination. It can be easily repaired.

# BETTER INSULATION

## HOW TO GET A WARM FUZZY FEELING

Next, we glue residential style glass wool insulation in-between the frame, expanding the insulation to full capacity. This thermal and acoustical insulation is made of long, resilient glass fibers bonded with a thermosetting resin. Bonded glass is dimensionally stable and allows better coverage through out the entire coach.



## A SUPERIOR ROOF

### OUR BETTER ROOF

Our 5" all-aluminum roof rafters allow us to install two, soft start, 15,000 standard air conditioners and ensure universal cooling with a dual zone control system.

Glass wool insulation is installed including a Radiant Thermo-Foil, which is wrapped underneath the front cap.



Next a full-length 3/8" wood decking is screwed (not stapled) into place. Our final step is adding a tear and puncture-resistant AlphaPly roofing membrane.



# THICK ROOF MEMBRANE



- Alpha Systems' AlphaPly TPO membrane is 35 Mil, by far the thickest in the marketplace. Here are the other systems on the market: Dicor Diflex is 27 Mil, Dicor Tufflex PVC is 25 Mil, Lasalle PVC is 28mil, Alpha SuperFlex is 30 Mil.

• Peel adhesion is approximately five times higher than Alpha's current SuperFlex system. For example, other TPO systems (DiFlex) have about 1.5 pounds of pull before the membrane lets go of the wood deck (industry normal). AlphaPly has about 8 pounds of pull!

- The AlphaPly 5121 Sealant Package is 100% solids (no solvents).
  - No swelling of the membrane
  - No shrinking of sealant means less material used/savings
  - Very low maintenance required of sealant in the field after years of weathering
- An extremely pliable and workable membrane (install friendly).
- The entire roofing package (adhesive, membrane and sealant) is manufactured by Alpha Systems. We are not a distributor like our competitors who only put their name on a label and do not manufacture anything.
- AlphaPly comes with a limited lifetime warranty vs. the industry standard 12-year warranty.

**35MIL**  
THICKEST RV ROOF MEMBRANE EVER

**40-80%**  
THICKER THAN ALL OTHER RV ROOF MEMBRANES IN THE MARKET

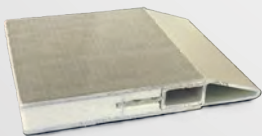
**5x**  
HIGHER PEEL ADHESION RESULTS

**100%**  
SOLID SEALANT (NO SOLVENTS)

**LIMITED  
LIFETIME**  
MEMBRANE WARRANTY

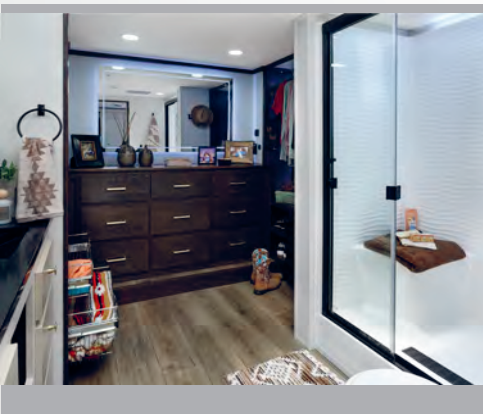
## COMPOSITE PANELS

- Vixenite™ is lighter than plywood for increased performance
- Water Resistant – protects against rot, mildew, swell and moisture absorption
- provides/is resistant to ants, termites, moths, bugs and beetles
- Strong – Vixenite™ has a high strength-to-weight ratio
- High compression strength
- No Seams – an entire floor, roof, or sidewall can be made with one solid piece of Vixenite™
- High manufacturing tolerances for fast, hassle-free installation
- Insulation Values – With no thermo breaks in our panels, Vixenite™ products deliver true insulative values.
- Superior fatigue characteristics



**vixen** composites

# MODERN AND COMFORTABLE INTERIOR DESIGNS



# CONTROL FREAK CONNECTIVITY

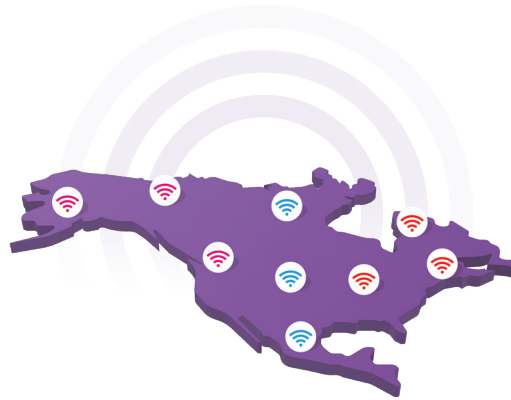
travlf<sup>fi</sup>

*Internet That Travels With You*

*ONE DEVICE, ONE PLAN,  
MULTIPLE NETWORKS*

## No SIM needed!

E-SIM technology automatically connects to the strongest signal among major networks to bring you reliable Wi-Fi across North America.'



## SCAN HERE

To see special offers going on right now and to learn more about TravlFi.



Stop struggling with dead zones or juggling several hotspots on the road. TravlFi brings you multi-network coverage so you are connected to the strongest signal with one plan, on one device.



# TESTING AND INSPECTIONS

To ensure that you are extremely pleased with the Cedar Creek you buy, we inspect every unit in a variety of ways.

100 lb. air pressure tests are done on all the gas and water lines midway in the manufacturing process. This ensures that all of the utility lines are installed properly as the unit is being assembled.

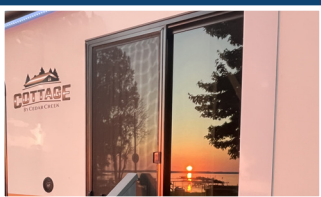
Hydraulics are the most powerful and reliable systems in fifth wheels. All slide-rooms and hydraulic jacks are tested right on the production line to ensure proper working order. This process eliminates air bubbles within the hydraulic lines.

Our inspectors conduct water pressure tests as the unit goes down the production line. This is done by filling all water lines up into the shower and sinks.

To ensure that you are extremely pleased with the your Cedar Creek, air is blown inside each unit during the final finish process, to ensure that windows and doors are sealed properly. This is achieved by spraying soapy water around all exterior openings to discover if air is leaking out.



## MORE REASONS TO BUY: THE ADVENTURES!





Weekly, Cedar Creek units are put through Forest River's pre-delivery inspection facility. This 20,000 square foot facility gives our customers the ultimate assurance of quality. Our state-of-the-art facility gives immediate, daily feedback to production for optimum quality assurance in every unit we build.

Now you can see why Cedar Creek is the smart choice for the experienced RV'er. We have taken every step to ensure that you not only have an RV that will last a very long time, but one that will provide you all of the comforts and conveniences that you expect on the road.

To watch our production video please visit our website at:

[www.forestriverinc.com/cedarcreek](http://www.forestriverinc.com/cedarcreek)



# WHO WE ARE AND WHAT WE DO THAT MATTERS

For over 27 years, Cedar Creek has been dedicated to enhancing the joy of the outdoors and your peace-of-mind, by building better quality recreational vehicles and wide body travel trailers which are designed to withstand rugged road conditions and extreme temperatures.

Cedar Creek owners appreciate the feeling of safety, security and reliability each unit provides as they move forward to their next big adventure.



Cedar Creek's manufacturing facility is in Topeka, Indiana. This 150,000 square foot building was built specifically for the Cedar Creek's line of products and employs over 135 men and women. Production time from beginning to end is approximately 3 days.

Construction is the #1 concern in purchasing an RV. So with so many options available, why make your next purchase a Cedar Creek? Construction. Only two manufacturers in the country build to the same standards as Cedar Creek.

This construction is not easy. It is built from the ground up by our dedicated production team, without the use of purchased lamination sidewalls, and is designed for the sole purpose of serviceability. Trust Cedar Creek's reputation for your peace-of-mind.



## CEDAR CREEK FW

Cedar Creek is dedicated to enhancing the joy of the outdoors and your peace-of-mind by building better quality recreational vehicles designed to withstand rugged road conditions and extreme temperatures.



## COTTAGE FW

The Cottage fifth wheel is a new line of luxury RVs that brings the experience of owning a high-end fifth wheel within reach. With sleek designs and top-of-the-line features, these RVs offer all the comforts of home at an affordable price.



## COTTAGE TT

The Cedar Creek Cottage destination trailer and fifth wheel are not just an RV, they are luxurious retreats on wheels designed for your favorite locations. These units are specifically designed to be set up at your preferred location.

## CEDAR CREEK



## FOREST RIVER INC. CEDAR CREEK DIVISION

501 Hawpatch Road • Topeka, IN 46571

Phone: 260-593-4013 • Parts & Service Phone: 260-593-4000

Visit our website at:

[forestriverinc.com/cedarcreek](https://forestriverinc.com/cedarcreek)



Actual towing capacity is dependent on your particular loading and towing circumstances, which includes GVWR, GAWR and GCWR, as well as adequate trailer brakes. Please refer to the Owner's Manual of your vehicle for further information. All information contained in this brochure is believed to be accurate at the time of publication. However, during the model year, it may be necessary to make revisions and Forest River, Inc., reserves the right to make all such changes without notice, including prices, colors, materials, equipment and specifications as well as the addition of new models and the discontinuance of models shown in this brochure. Therefore, please consult with your Forest River dealer and confirm the existence of any materials, design or specifications that are material to your purchase decision. ©2024 Forest River, Inc., a Berkshire Hathaway company. All Rights Reserved. 2/26