

A FOREST RIVER® BRAND

DYNAMAX

FORESTRIVERINC.COM

5 SERIES *isata*

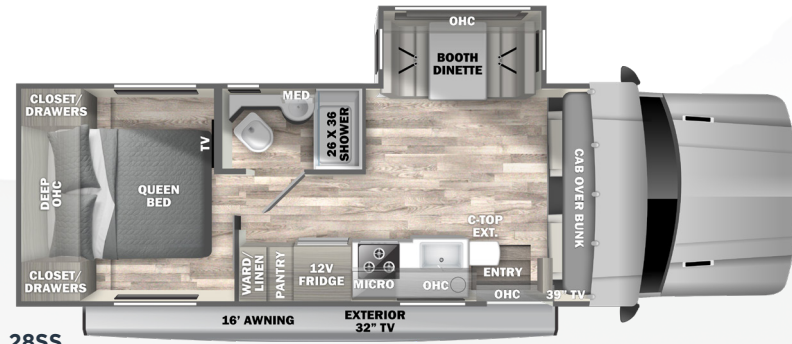
2026



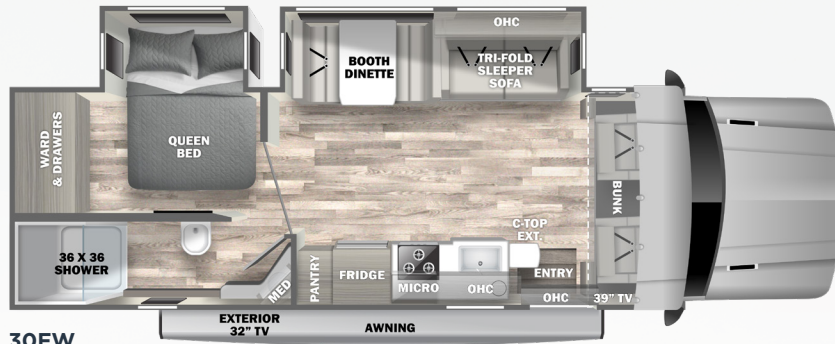
Pictured with Optional Xplorer Dark Full Body Paint

ISATA 5 SERIES

In the Isata 5 Series driver's seat, you'll enjoy the confidence that comes with the control, comfort, and stability of the Ram 5500 4x4 Chassis. Meanwhile, everywhere you look you'll see the extra touches - including cut and buffed paint, RV-friendly features, and luxury amenities. So wherever your journeys take you - along the busy highway or up the mountain pass, or even on the "roads less traveled", the Isata 5 Series will provide freedom and comfort like nothing else on the road.



28SS



30FW

OPTIONS



DUAL POWER THEATER SEATS
IPO Dinette (28SS)
IPO Sofa (30FW)



12V FRIDGE
(30FW)

SPECIFICATIONS	28SS	30FW
GVWR (lbs.)	19,500	19,500
GCWR (lbs.)	37,500	37,500
GAWR - Front (lbs.)	7,250	7,250
GAWR - Rear (lbs.)	13,500	13,500
UVW* (lbs.)	16,203	16,856
Overall Length	31' 2"	33' 3"
Exterior Width	96"	96"
Wheelbase	217"	237.5"
Overall Exterior Height w/15,000 BTU Roof A/C)	12' 4"	12' 4"
Overall Exterior Height - Extreme w/15,000 BTU Roof A/C)	13' 1"	13' 1"
Interior Height	82"	82"
Fuel Capacity (Gal.)	52	52
Water Capacities (Gal.) Fresh/Gray/Black	78/45/45	78/45/45
LPG Capacity (WC) (Gal./lb.)	20.3/86	20.3/86
Awning Length	16'	16'

*UVW is an estimate only based on standard equipment.

STANDARD FEATURES & OPTIONS

CHASSIS

- Ram 5500 SLT Chassis - Factory 4-Wheel Drive (19,500-lbs. GVWR / 37,500-lbs. GCWR)
- Cummins 6.7L I6 Turbo Diesel Engine (360 hp / 800 lb-ft. of Torque)
- AI SIN HD 6-Speed Automatic Transmission
- 4.89 Rear Axle Ratio
- Trailer Hitch (10,000 Tow lbs. / 750 Tongue lbs.) with 7-Way Round Tow Connection
- 52-Gallon Fuel Tank
- 9-Gallon Diesel Exhaust Fluid Tank
- Dual 220-Amp Alternators (440 Total Amps)
- Cummins Smart Exhaust Brake System
- Ram OEM Trailer Brake Control
- 4-Wheel ABS
- DynaRide+ Upgraded Suspension System featuring Four-Point Bilstein Gas-Charged Shock Absorbers and Rear MORyde RSX Rubber Shear Springs with Heavy-Duty Rear Sway Bar
- Ram ESC Suspension and Stability Package
- Remote Start System
- Active Brake Assist
- Adaptive Cruise Control
- Lane-Keep Assist
- Traffic Sign Recognition
- Auto High Beam Headlamp Control
- Fog Lights
- Daytime Running Lights
- Front and Rear Tires: 225/70R19.5G (All Position Front and Rear Traction)
- Single Front Wheels and Dual Rear Wheels (19.5" x 6")
- Tire Pressure Monitoring System
- Engine Block Heater
- Heated, Leatherette Reclining Driver and Passenger Seats with Armrest
- Power Driver Seat with Power Lumbar Control
- Quad-View Camera System (Right Side, Left Side, Hitch, and Rear Horizon Views)
- 8.4" Touch Screen Dash Radio with U-Connect, Hands-Free Voice Command with Bluetooth, Media Hub (SD, USB, AUX), Apple CarPlay, Android Auto, 4G LTE Wi-Fi Hotspot Ready, and Six (6) Speakers
- 400W Inverter with 115V AC Dash Receipt
- 12V and USB Accessory Ports
- Momentary Battery Booster Switch for Connecting Chassis and House Batteries
- Temperature/Compass Gauge with Traveler/Mini-Trip Computer
- Heated Steering Wheel
- Adjustable Steering Column
- Power and Heated Exterior Mirrors with Courtesy Lamps and Turn Signals
- Rain-Sensitive Windshield Wipers
- Power Windows and Locks
- 3-Point Seat Belts
- Front Safety Airbags
- B-20 Bio Diesel Capability

*Running Change: Ram 5500 Big Horn Chassis

*Starting at SGC007238:

- Ram 5500 Big Horn Chassis - Factory 4-Wheel Drive (19,500-lbs. GVWR / 37,500-lbs. GCWR)
- 8-Speed TorqueFlite HD Automatic Transmission
- 4.44 Rear Axle Ratio
- 220-Amp Alternator
- Power, Heated Leatherette Cab Seats with Power Lumbar Controls and Armrest

- RAM Dash Infotainment Description after reviewing spec PDF: 12" Touch Screen Dash Infotainment Center featuring U-Connect 5 Nav with Navigation, HD Radio, Hands-Free Voice Command with Bluetooth, Apple CarPlay, Android Auto, Sirius/XM with 360L Ready, 4G LTE Wi-Fi Hotspot Ready, Alexa Ready, and Six (6) Premium Speakers

CONSTRUCTION

- 2" Aluminum-Framed, Laminated Sidewalls with High-Density Block Foam Insulation
- Composite Exterior Fiberglass (No Exterior Wood)
- Aluminum-Framed Floor
- Composite Flooring Substrate (Lightweight & Moisture-Resistant)
- Aluminum-Framed Roof Trusses
- Crowned, One-Piece Fiberglass Roof
- Foil-Lined Ductwork Throughout
- Fiberglass Front Cap and Front Wing Panels
- Rear Bumper
- Automatic, 4-Point Hydraulic Leveling Jacks
- Dark-Tinted, Frameless Windows

*Starting at SGC007255:

- Dual-Pane Acrylic Windows with Built-In Night Shades and Screens
- Seamless Rotocast Storage Compartments with LED Lighting
- Side-Hinged, Locking Aluminum Exterior Storage Doors with Paddle Latches

EXTERIOR

- Custom Full Body Paint Package
- Premium Cut and Buffed Paint Finish
- Front-End Diamond Shield Paint Protection
- Armless Patio Awning with LED Lighting and Motion-Activated Retraction
- Slideout Toppers
- LED Patio Light
- Entry Door with Rotary Latch; Dark-Tinted, Frameless Window; and Integrated Shade
- Keyless Entry Touch Pad at Entry Door
- Remote Key Fob Entry (Integrated with Chassis Key Fob)
- Lighted Acrylic Entry Grab Handle
- Power Entry Steps with Upgraded SeaDek Step Treads
- Exterior Wall-Mounted Entertainment Center with 32" LED SMART TV (30FW)
- Exterior TV Mount (28SS - Bedroom TV is Portable)
- Front and Rear LED Clearance and Marker Lighting
- Rear LED Docking Lights
- Rear "DYNAMAX" Rock Guard
- Aluminum Running Boards

INTERIOR

- Custom Full Body Paint Package
- Premium Cut and Buffed Paint Finish
- Front-End Diamond Shield Paint Protection
- Armless Patio Awning with LED Lighting and Motion-Activated Retraction
- Slideout Toppers
- LED Patio Light
- Entry Door with Rotary Latch; Dark-Tinted, Frameless Window; and Integrated Shade
- Keyless Entry Touch Pad at Entry Door

- Remote Key Fob Entry (Integrated with Chassis Key Fob)
- Lighted Acrylic Entry Grab Handle
- Power Entry Steps with Upgraded SeaDek Step Treads
- Exterior Wall-Mounted Entertainment Center with 32" LED SMART TV (30FW)
- Exterior TV Mount (28SS - Bedroom TV is Portable)
- Front and Rear LED Clearance and Marker Lighting
- Rear LED Docking Lights
- Rear "DYNAMAX" Rock Guard
- Aluminum Running Boards

KITCHEN

- 16 cu. ft. Residential Refrigerator with Ice Maker (30FW)
- 12V 10 cu. ft. 2-Door Compressor-Driven Refrigerator (28SS, 28SS Extreme, and 30FW Extreme)
- Gas Range with Glass Cover
- Convection Microwave Oven with Air Fryer Functionality
- Solid Surface Countertops with LED Edge Lighting and Backsplash
- Stainless Steel Sink with Roll-Up Stainless Steel Slotted Covers
- Residential Stainless Steel Spring Gooseneck Faucet
- Pantry
- Overhead Cabinet Accent Lighting
- Under-Cabinet Lighting
- MaxxAir Power Vent with Built-In Rain Cover

BEDROOM OR BUNK AREA

- Queen Bed (60" x 75") with Gel-Infused Memory Foam Mattress
- Deluxe Padded Headboard (28SS)
- Designer Bedding Package
- 32" LED SMART TV
- Cedar-Lined Wardrobe
- LED Reading Lights
- USB/USB-C Charging Ports

BATHROOM

- Designer Shower (28SS: 26" x 36" / 30FW: 36" x 36")
- Glass Shower Door (28SS)
- Soft-Sided Shower Door (30FW)
- Shower Skylight

- Oxygenics Body Spa RV Shower Head
- Stainless Steel Sink with Residential Faucet
- Porcelain Electronic-Flush Macerator Toilet (28SS)
- Porcelain Foot-Flush Toilet (30FW)
- MaxxAir Power Vent with Built-In Rain Cover

UTILITIES

- Dual Low-Temp Lithium Auxiliary Batteries (200Ah Total) *Starting at SGC007392:
- Dual Low-Temp Lithium Auxiliary Batteries (480Ah Total)
- 200W Glass Solar Panel with 30-Amp Controller
- 3,000W Hybrid Pure Sine Wave Inverter/Charger
- 50-Amp Service with 30' Detachable Power Cord
- Firefly Multiplex Wiring with Touch Screen Command Center, Switch Panels, and Bluetooth Smart Phone App Control
- 8kW Onan Diesel Generator with Auto Transfer Switch (Mounted on Isolator Pads)
- Automatic Generator Start
- Energy Management System (EMS)
- Battery Disconnect
- Dual Ducted, Low-Profile 15,000-BTU Air Conditioners with Heat Pumps
- 40,000-BTU LP Furnace with Electronic Ignition
- 60,000-BTU Truma AquaGo Comfort Plus On-Demand Water Heater (LP)
- 20.3-Gallon LP Tank (WC)
- LP Quick Connect
- Water Filtration System
- Exterior Shower in Service Bay
- Exterior GFCI Receptacle
- Prepped for Roof-Mounted Starlink Satellite Internet System
- Prepped for Roof-Mounted Satellite
- Winegard OTA HDTV Antenna
- 4x4 HDMI Matrix
- Cable TV/Satellite Hookup in Service Bay
- Gravity Sewer System
- Black Tank Flush
- SureLevel Tank Level Monitoring System
- Furnace-Heated Utility Compartment
- Enclosed and Furnace-Heated Holding Tanks
- Upgraded 12V On-Demand Water Pump (4 gallons per minute)
- Carbon-Monoxide, LP, and Smoke Detectors
- Fire Extinguisher



30FW with Mindful Gray cabinetry and Milano II décor

OPTIONS

- Single Color Full Body Paint
- 12V 10 cu. ft. 2-Door Compressor-Driven Refrigerator in place of Standard Refrigerator (30FW)
- Dual, Power Reclining Theater Seats in place of Dinette (28SS)
- Dual, Power Reclining Theater Seats in place of Sofa (30FW)
- Xplorer Package - includes Dual-Pane, Dark-Tinted Frameless Windows; Insulated Cab Curtain; Four Lithium House Batteries (400Ah Total); 1,000W Solar Package; Insulated Utility Bay with Secondary Tank Heater and Temperature Sensor; and Access to Exclusive Xplorer Package Paint Scheme (Dark, Light, or Midnight)
- * Starting at SGC007255:
- Dual-Pane Acrylic Windows with Built-In Day/Night Shades will be a Standard Feature
- ** 28SS Starting at SGC007500:
- Three Lithium House Batteries (720Ah Total)
- ** 30FW Starting at SGC007392:
- Three Lithium House Batteries (720Ah Total)



FULL BODY PAINT PACKAGES

With Front-End Diamond Shield

Available in Admiral Blue, Granite, Khaki, Magnetic and Merlot.
Photos coming soon.



Shown in Xplorer Midnight

EXTREME PACKAGE (28SSEX & 30FWEX)

- Four-Point LiquidSpring Smart Suspension (with Adjustable Ride Height and maximum height of 13' 1") and Earth Leveling in place of Hydraulic Leveling Jacks
- Lifted Chassis (4" in Rear and 2" in Front)
- Super-Single Rear Wheels
- 40" Tires with Black Aluminum Wheels
- Custom Wheel Flares
- Black Grille
- Upgraded, Off-Road Front Bumper with LED Lights

Note: Adaptive Cruise May Be Affected By Certain Conditions Due To The Increased Ride Height

THE OPTIONAL, ALL-SEASON XPLORER PACKAGE

Tested and developed for over a decade in the Canadian Rockies



Shown with Xplorer Package Full Body Paint available in “Light” (Top), “Dark” (Middle) and “Midnight” (Bottom). “Midnight” also shown with optional Extreme Package.

Xplorer Package includes:

- **Upgraded Lithium Batteries** - 400Ah with built-in heaters to maximize off-grid efficiency
* 28SS Starting at SGC007500:
• Three Lithium House Batteries (720Ah Total)
**30FW Starting at SGC007392:
• Three Lithium House Batteries (720Ah Total)
- **Enhanced Solar Power** - 1000 Watts with MPPT controllers for up to a 30% better charging rate
- **Dual-Pane Windows** - reduce condensation to help maintain interior temperature
- **Furnace-Heated Utility Bays with Thermal-Foil Insulation** - enhance heat retention.
- **Secondary 12V Tank Heater in Utility Bay** - thermostatically-controlled; provides auxiliary/back-up heat
- **Temperature Sensor in Utility Bay** - displays on interior multiplex panel
- **Enhanced Insulation in Walls, Floor, and Roof** - more easily maintains optimal interior temperature
- **Insulated Cab Curtain** - closes off the cab area in colder climates to minimize heat loss

DÉCOR SELECTIONS

SADDLE

Main

MILANO II

Main

Valance with Accent

DESERT (Dealer Stock Only)

Main

Valance with Accent



DRIFTWOOD II

Kitchen
Countertop

Drawers



MINDFUL GRAY

Kitchen
Countertop

Drawers

EACH NEW FOREST RIVER PURCHASE PROVIDES:

- ✓ Pre-delivery Inspection.
- ✓ Digital Owner's Manual.
- ✓ Free Membership to Forest River Owners Group (FROG).
Learn more at www.forestriverfrog.com.
- ✓ A Contribution to Care Camps Foundation www.carecamps.org.
- ✓ 1 Year Free Roadside Assistance from Date of Purchase.



SPEC DEFINITIONS:

Scan on your smartphone to learn RV terminology and more!



LEARN MORE:

Scan this QR code with your mobile device to learn more about Forest River.



All information contained in this brochure is believed to be accurate at the time of publication. However, during any model year, it may be necessary to make changes to the manufacturing process of the units and information in this brochure. Your unit may differ from the information in this brochure due to any changes in the manufacturing process and equipment. Forest River, Inc. reserves the right to make all such changes without notice, including prices, colors, combinations, materials, equipment and specifications of any model as well as the addition of new models and the discontinuance of models shown in this brochure. Therefore, please consult with your Forest River dealer and confirm the availability of any materials, combinations, designs, or specifications that are meaningful to your purchase decision.

©2026 Dynamax, a Division of Forest River, Inc., a Berkshire Hathaway Company. All Rights Reserved. Forest River, Inc. 02/26

DYNAMAX

2745 Northland Dr. • Elkhart IN 46514
574-262-3474 • www.dynamaxcorp.com



YOUR ISATA 5 SERIES DEALER