

A FOREST RIVER® BRAND

DYNAMAX

FORESTRIVERINC.COM

# GRANDSPORT

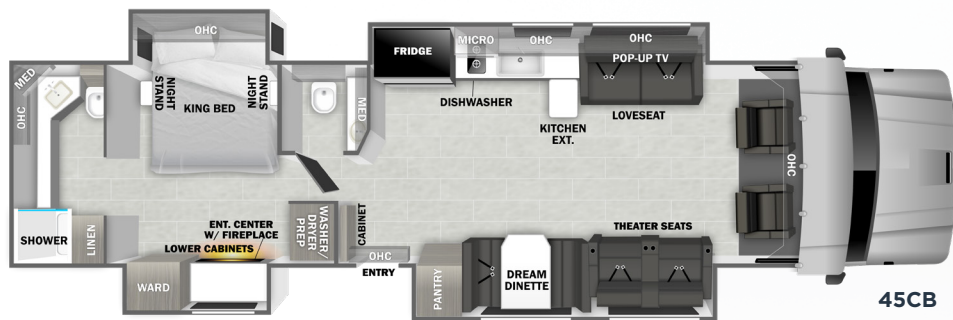
2026





## GRAND SPORT

The Grand Sport's clean, contemporary styling features modern hardwood cabinetry and is equipped with all the comforts, including a king size bed, a solid surface kitchen countertop, a comfortable 64" sleeper sofa and a roomy dream dinette.



SPECIFICATIONS	45CB
GVWR (lbs.)	58,000
GCWR (lbs.)	80,000
GAWR - Front (lbs.)	18,000
GAWR - Rear (lbs.)	40,000
UVW* (lbs.)	41,590
Overall Length	44' 11"
Exterior Width	102"
Wheelbase	349"
Overall Exterior Height w/A/C	13' 0"
Interior Height	86"
Fuel Capacity (Gal.)	120
Water Capacities (Gal.) Fresh/Gray/Black	150/75/75
LPG Capacity (WC) (Gal.)	N/A
Awning Length	21' Front/12' 6" Back

\*UVW is an estimate only based on standard equipment.

## STANDARD FEATURES & OPTIONS

### CHASSIS

- Freightliner Cascadia 126 Tandem Twin-Screw Chassis (58,000-lbs. GVWR / 80,000-lbs. GCWR)
- Detroit DD16 15.6L Diesel Engine (600hp / 1,850 lb.-ft. of Torque)
- DT-12 Efficient 12-Speed Automatic Transmission
- 3.08 Rear Axle Ratio
- Trailer Hitch (32,000, 40,000 Pintle Tow lbs., / 6,000 Tongue lbs.) with 7-Way Round Tow Connection
- 120-Gallon Fuel Capacity
- 13-Gallon Diesel Exhaust Fluid Tank
- 300-Amp Brushless Alternator
- Air Brakes with 4-Wheel ABS and Automatic Slack Adjusters
- Brake Line Air Dryer with Heater
- C-Brake by Jacobs with High/Low Settings
- Glad Hands Air Brake Connection and Controller
- 40,000-lb. Rear Air Suspension
- Automatic Rear Air Deflation System
- Rear Locking Differential
- Detroit Safety Assurance Package: Active Brake Assist, Adaptive Cruise Control, Lane Departure Warning, Detroit Connect Safety Event Viewer
- Steel-Reinforced, Aluminum Cab
- Chrome Grille
- LED Headlights
- Fog Lights
- Daytime Running Lights
- Tinted Door Glass
- Front Tires: 315/80R22.5
- Rear Tandem Tires: 295/80R22.5
- Single Front Wheels: Alcoa Aluminum (22.5" x 9.00") \*Outside Rims are Polished
- Tandem Dual Rear Wheels: Alcoa Aluminum (22.5" x 8.25") \*Outside Rims are Polished
- Valve Extensions
- Bendix SmartTire Banded Tire Pressure Monitoring System
- Quick Disconnect Fitting with Tire Inflation Kit
- Engine Block Heater
- Leatherette Driver and Passenger Air Ride Seats with Swivel Bases
- Bird's Eye View 360° Camera System
- 10" Touch Screen Dash Infotainment System with AM/FM, Bluetooth, Sirius/XM (Tuner and Antenna), Wired and Wireless Apple CarPlay / Android Auto Connectivity, and USB-C Port
- Multiple USB/12V Charging Ports on Dash
- Chassis Battery Shut Off Switch in Cab
- Air Horn
- One Valve Parking Brake System with Warning Indicator
- Engine After-Treatment Device, Automatic Over-the-Road Regeneration, and Dash-Mounted Regeneration Switch
- Momentary Battery Booster Switch for Connecting Chassis and House Batteries
- Marker Lights with Separate Interrupter Switch
- Low Air Pressure Light and Buzzer
- Adjustable Steering Column
- Leather-Wrapped Smart Steering Wheel
- Dual Bright Remote/Heated Mirrors
- Power Windows and Locks
- 3-Point Seat Belts

### CONSTRUCTION

- 2" Aluminum-Framed, Laminated Sidewalls with High-Density Block Foam Insulation
- Azdel Exterior Fiberglass (No Exterior Wood)
- Steel Basement Structure
- One-Piece Molded Fiberglass Roof Cap over Vacuum-Bonded Aluminum Trusses and High-Density Block Foam Insulation
- Quiet Integrated Air Conditioner Intake/Ducting Roof System with Channeled Rooftop Air Conditioner Drains
- Fiberglass Rear Cap and Front Wing Panels
- Automatic, 4-Point Hydraulic Leveling Jacks
- Dual-Pane, Dark-Tinted, Frameless Square Windows with Built-In Night Shades and Screens
- Bonded Front Cap Window with Power Shade
- Steel Storage Compartments with LED Lighting
- Side-Hinged, Locking Aluminum Exterior Storage Doors with Chrome Handles
- Prepped for Ladder on Rear Cap

### EXTERIOR

- Custom Full Body Paint Package with Scheme-Matching Cab Door Jambs and Slideout Sides
- Premium Cut and Buffed Paint Finish
- Front-End Diamond Shield Paint Protection
- Dual Roof-Mounted, Integrated Armless Patio Awnings with LED Lighting and Wind Sensors
- Aluminum-Wrapped Slideout Toppers
- LED Patio Light
- 30" Entry Door with Rotary Latch; Dark-Tinted, Frameless Window
- Keyless Entry Touch Pad at Entry Door
- Remote-Locking Entry Door and Exterior Storage Doors
- "One Key" Locking System for Exterior Storage Doors and Entry Door
- Lighted Acrylic Entry Grab Handle
- Power Entry Steps with Upgraded SeaDeck Step Treads
- Exterior Wall-Mounted Entertainment Center with 40" LED Smart TV with Integrated JBL Sound Bar on Swivel Extension Mount
- Front and Rear LED Clearance and Marker Lighting
- Side Docking Lights
- Rear "DYNAMAX" Rock Guard

### INTERIOR

- Cab-Over Bunk with Mattress and Privacy Partition (Mattress is 51" Wide and Length Tapers Back to Front from 80" to 66")
- Heated Porcelain Tile Throughout
- Deluxe Vinyl with Pad in Select Living Area Slide Rooms
- Soft-Touch Padded Vinyl Ceiling
- Powered, Flush-Floor Stepwell Cover
- Lighted Porcelain Tile Entry Surround
- Fitted Entry Step Carpet Mats
- Dimmable LED Recessed Ceiling Lights
- "Soft Touch" Sprung, Residential Style Dinette Seats with Lift Up Storage
- Home Theater Lounge with USB Ports
- Love Seat
- Hardwood Shaker-Style Cabinetry
- Hardwood Shaker-Style Passage Doors
- Full Extension, Soft-Closing Drawer Guides (where applicable)



- Dovetail Joints on Cabinet Drawers
- Hidden Hinges
- 50" LED Smart TV (Living Area)
- Sonos Ultra Arc Sound Bar with Sub-Woofer

#### KITCHEN

- 22 cu. ft. Residential Refrigerator with Ice Maker
- Induction Range
- Convection Microwave Oven with Air Fryer Functionality
- Solid Surface Countertops with Accent Lighting and Tile Backsplash
- Stainless Steel Sink with Solid Surface Covers
- Residential Faucet with Pull-Out Sprayer
- Storage Compartment for Sink Covers
- Dishwasher
- Power Kitchen Countertop Extension
- Pantry
- Overhead Cabinet Accent Lighting
- Under-Cabinet Lighting
- MaxxAir Power Vent with Built-In Rain Cover

#### BEDROOM

- King Bed (70" x 80")
- Deluxe Padded Headboard
- Designer Bedding Package
- 43" LED Smart TV
- Fireplace
- Digital Safe in Wardrobe
- Nightstands with Solid Surface Countertops
- LED Reading Lights
- USB Charging Ports

#### BATHROOM

- Solid Surface Shower (38" x 40")
- Teak Fold-Down Seat in Shower
- Glass Shower Door
- Shower Skylight
- Deluxe Multi-Shower Head System
- Shower Miser
- Solid Surface Countertops with Tile Backsplashes
- Under-Mount Sinks with Residential Faucets
- Back-Lit Vanity Mirrors
- Porcelain Electronic-Flush Macerator Toilet (45CB: Rear Full Bath and Mid Bath)
- MaxxAir Power Vent with Built-In Rain Cover

#### UTILITIES

- Three (3) Low-Temp Lithium House Batteries (486Ah Total)
- Four (4) 200W Glass Solar Panels with MPPT Controllers
- 2,800W Hybrid Pure Sine Wave Inverter/Charger
- 50-Amp Service with 34' Power Cord Reel
- PrecisionPlex Multiplex Wiring with Touch Screen Command Center with Bluetooth Smart Phone App Control
- 10kW Onan Diesel Generator with Auto Transfer Switch (Mounted on Isolator Pads)
- Automatic Generator Start
- Energy Management System (EMS)
- Battery Disconnect
- Three (3) Ducted, Low-Profile 15,000-BTU Air Conditioners with Heat Pumps
- Oasis Hydronic Diesel Heat System with Continuous Hot Water
- Central Vacuum System
- Water Filtration System
- Exterior Shower in Service Bay
- Power Water Hose Reel in Service Bay
- Exterior GFCI Receptacle
- Starlink Satellite Internet System
- Winegard OTA HDTV Antenna
- 4x4 HDMI Matrix
- Cable TV/Satellite Hookup in Service Bay
- Thetford Sani-Con Turbo Macerator System
- 4-Way Water Management Valve in Sewer Bay
- Black Tank Flush
- Pressure Sense Tank Level Monitoring System
- Utility Compartment Heated by Oasis System
- Enclosed Holding Tanks Heated by Oasis System
- Upgraded 12V On-Demand Water Pump (4 gallons per minute)
- Carbon-Monoxide, LP, and Smoke Detectors
- Fire Extinguisher

#### OPTIONS

- Stackable Washer/Dryer

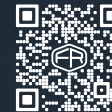
## EACH NEW FOREST RIVER PURCHASE PROVIDES:

- ✓ Pre-delivery Inspection.
- ✓ Digital Owner's Manual.
- ✓ Free Membership to Forest River Owners Group (FROG).  
Learn more at [www.forestriverfrog.com](http://www.forestriverfrog.com).
- ✓ A Contribution to Care Camps Foundation [www.carecamps.org](http://www.carecamps.org).
- ✓ 1 Year Free Roadside Assistance from Date of Purchase.



### SPEC DEFINITIONS:

Scan on your smartphone to learn RV terminology and more!



### LEARN MORE:

Scan this QR code with your mobile device to learn more about Forest River.



All information contained in this brochure is believed to be accurate at the time of publication. However, during any model year, it may be necessary to make changes to the manufacturing process of the units and information in this brochure. Your unit may differ from the information in this brochure due to any changes in the manufacturing process and equipment. Forest River, Inc. reserves the right to make all such changes without notice, including prices, colors, combinations, materials, equipment and specifications of any model as well as the addition of new models and the discontinuance of models shown in this brochure. Therefore, please consult with your Forest River dealer and confirm the availability of any materials, combinations, designs, or specifications that are meaningful to your purchase decision.

©2026 Dynamax, a Division of Forest River, Inc., a Berkshire Hathaway Company. All Rights Reserved. Forest River, Inc. 02/26

# DYNAMAX

2745 Northland Dr. • Elkhart IN 46514  
574-262-3474 • [www.dynamaxcorp.com](http://www.dynamaxcorp.com)



YOUR GRANDSPORT II DEALER